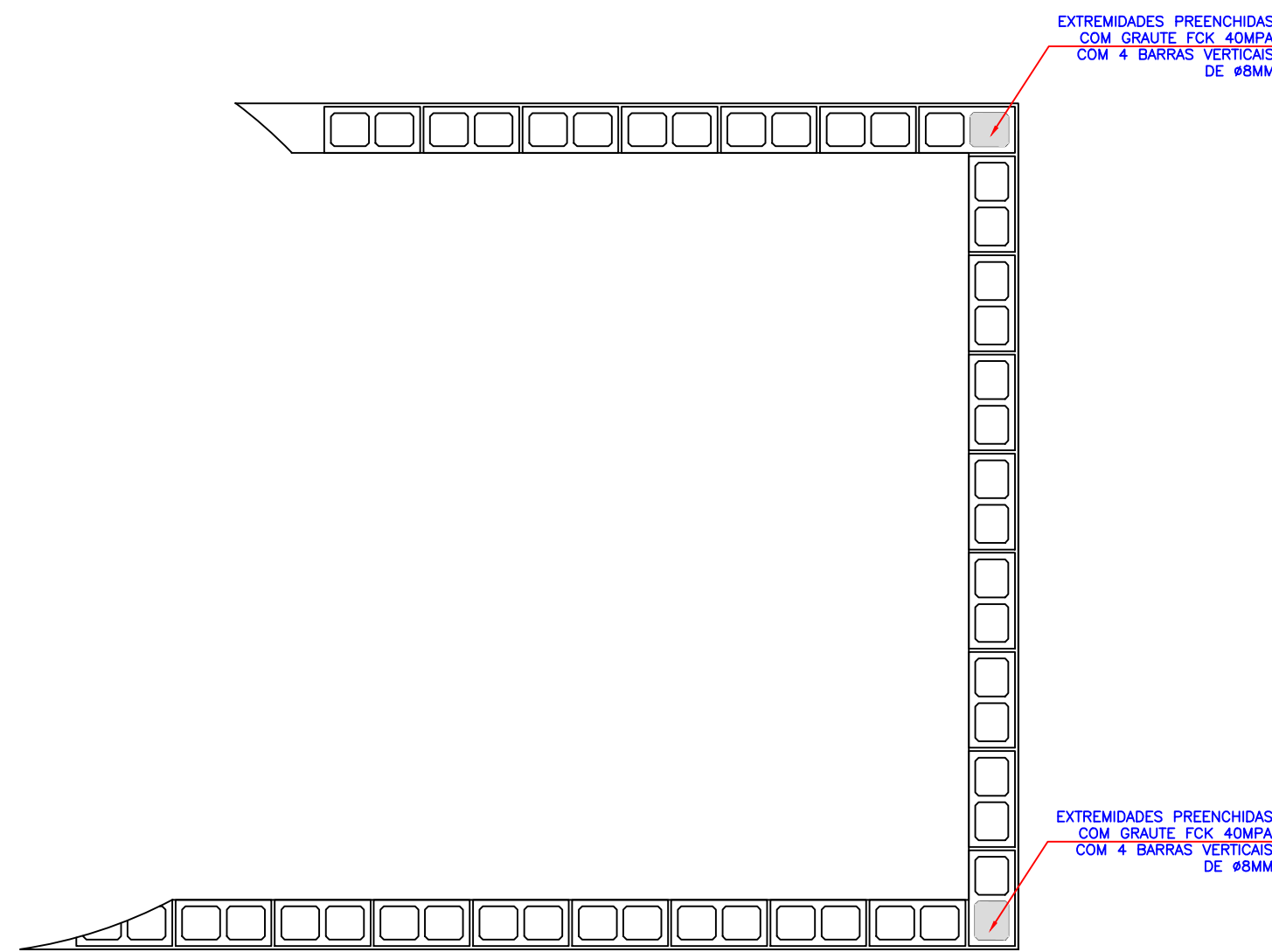


1 PAGINAÇÃO BLOCO - FIADA 1

ESCALA 1:20
OBS.: A ÚLTIMA FIADA DEVERÁ SER COM BLOCO CANALETA COM DUAS BARRAS DE AÇO #8,00MM CORRIDOS, CRIANDO UMA CINTA DE CONCRETO ARMADO

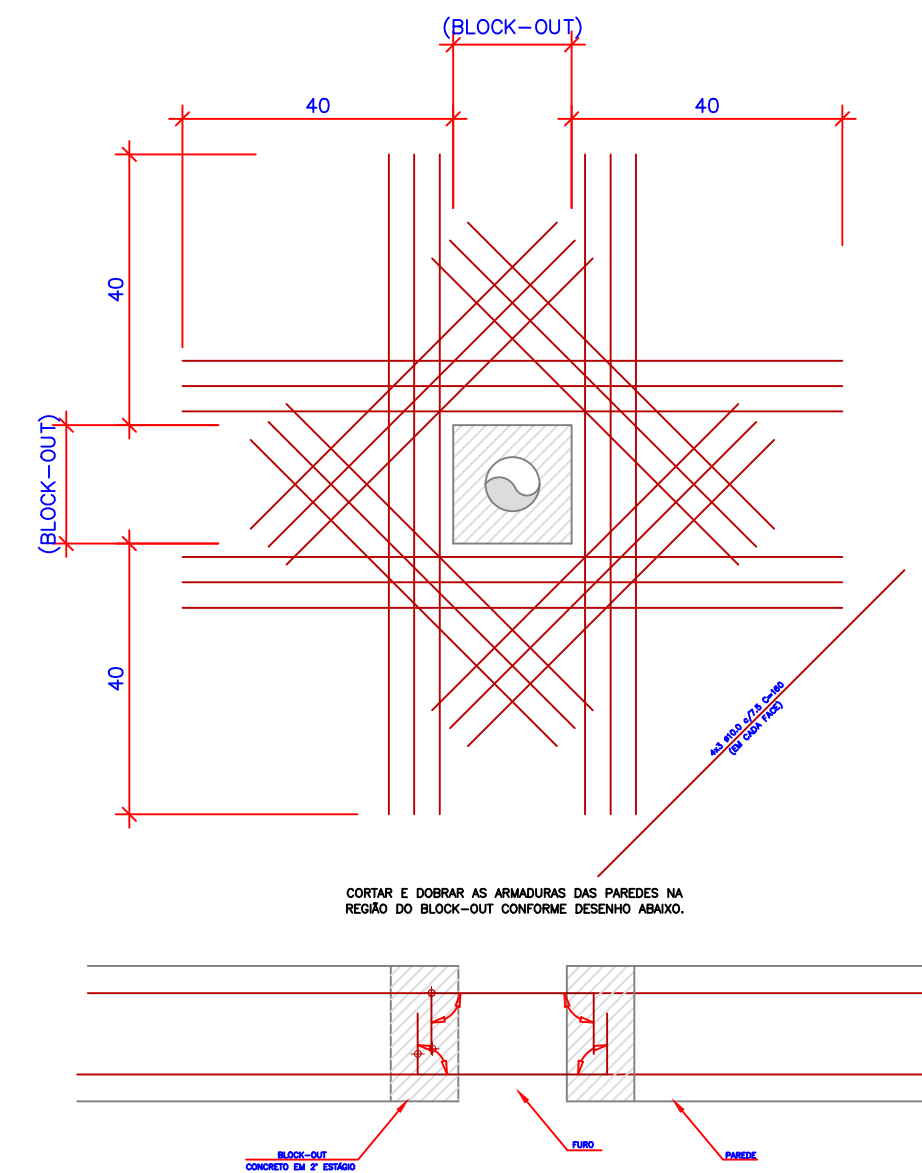


2 PAGINAÇÃO BLOCO - FIADA 2

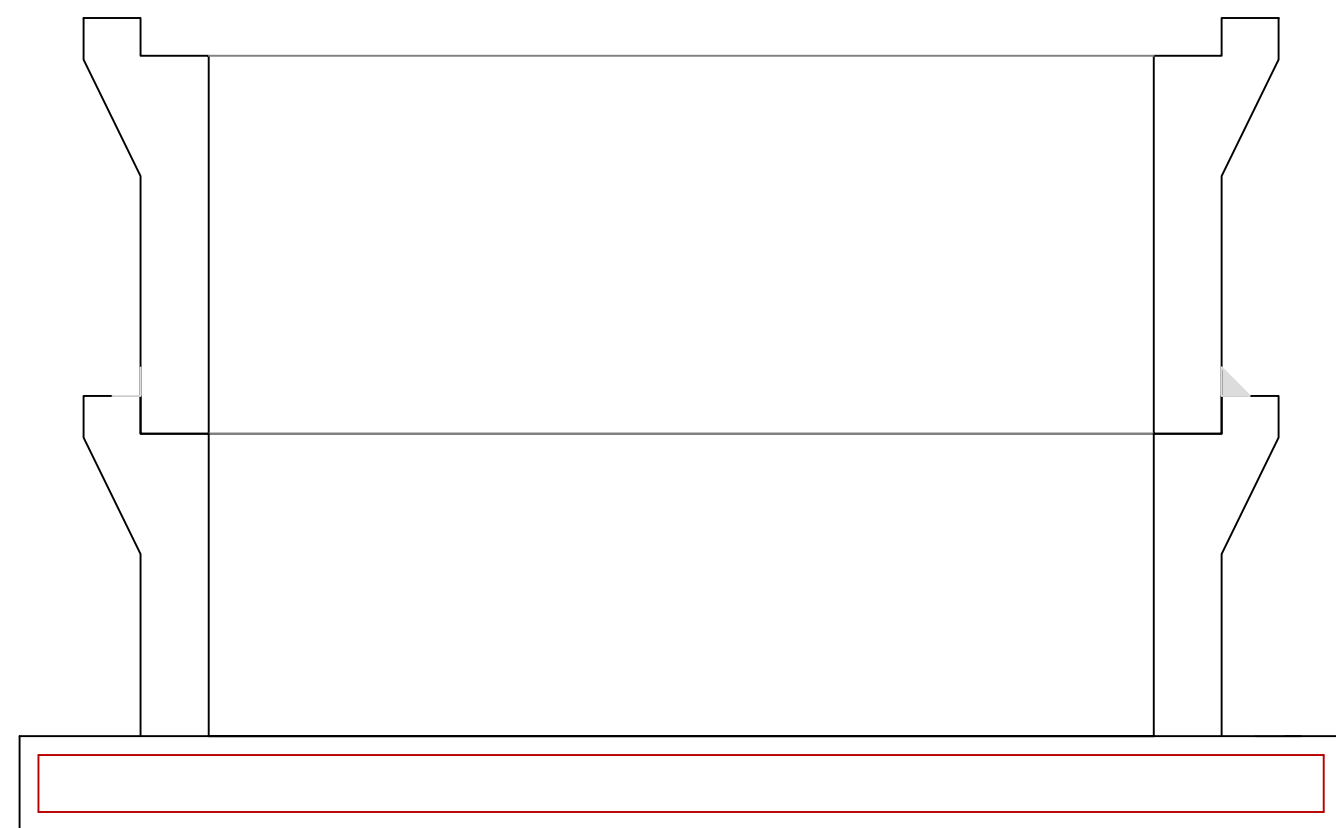
ESCALA 1:20

3 BLOCK-OUTs

ESCALA 1:20

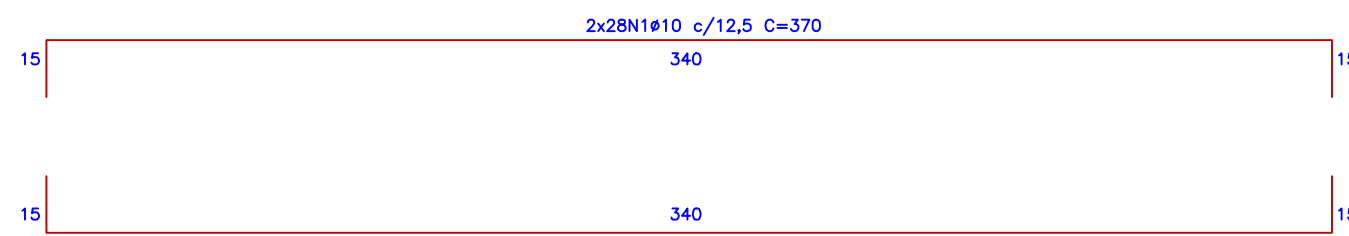


ϕ (mm)	lb (cm)
5,0	40
6,3	50
8,0	60
10,0	70
12,5	90
16,0	120
20,0	140

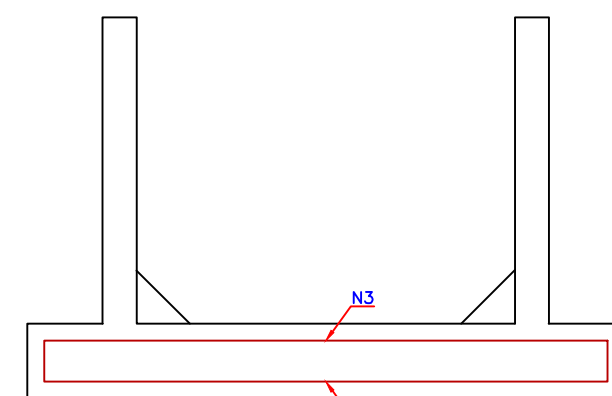


2 CORTE A-A

ESCALA 1:20

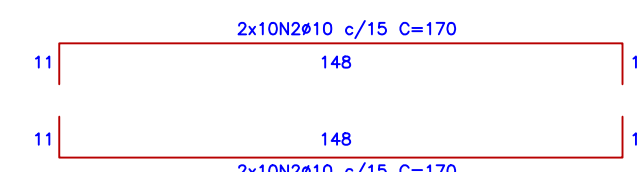


OBS.: REPETIR A ARMADURA TRANSVERSAL NO SENTIDO LONGITUDINAL



6 CORTE C-C

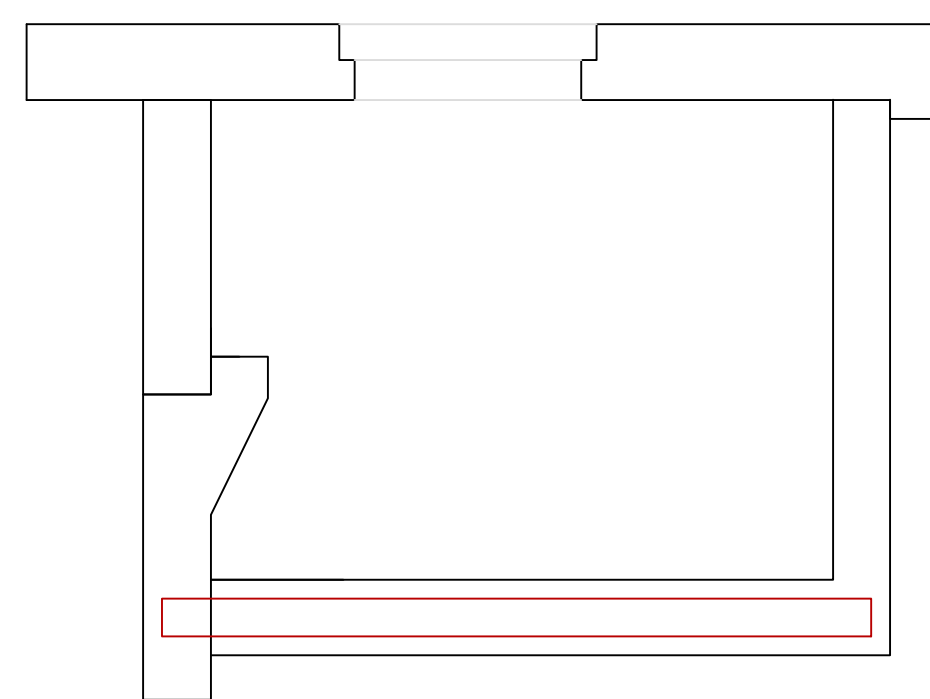
ESCALA 1:20



OBS.: REPETIR A ARMADURA TRANSVERSAL NO SENTIDO LONGITUDINAL

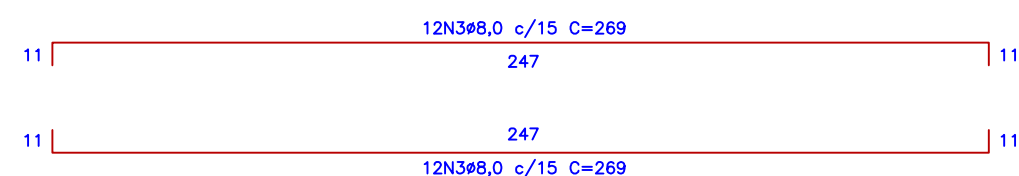
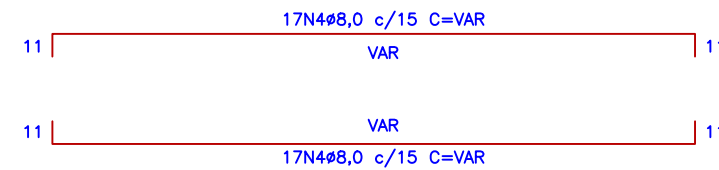
RELAÇÃO DO AÇO FUNDAÇÃO

AÇO	N	DIAM	Q	UNIT (cm)	C.TOTAL (cm)
50	1	10,0	112	370	41.440
50	2	10,0	40	170	6.800
50	3	8,0	24	269	6.456
50	4	8,0	34	VAR	6.528



2 CORTE B-B

ESCALA 1:20



OBS.: ARMADURA TRANSVERSAL

PB ENGENHARIA E CONSULTORIA



Felipe Domingues Petermann
Engenheiro Sanitarista e Ambiental
CREA SC 119070-8

PROJETO BASF-EEE-014	PROPRIETÁRIO Companhia de serviços de Água, Esgoto e Resíduos de Guaratinguetá
DATA 20/04/2023	LOCAL Guaratinguetá - SP
ESCALAS INDICADA	ASSUNTO Estação Elevatória de Esgoto - BASF -EEE-01
FOLHA 02/04	Projeto Estrutural
REVISÃO 01	Folha 03/04